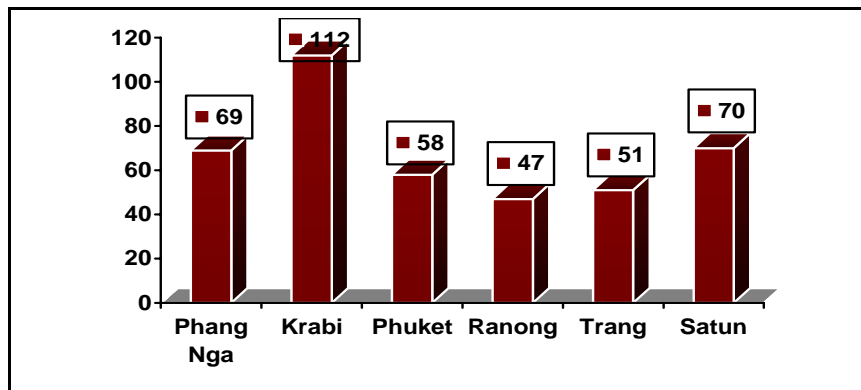


## Locations that were affected by the tsunami

No.	Province	Areas that were damaged		
		Districts	Sub-Districts	Villages
1	Phang Nga	6	19	69
2	Krabi	5	22	112
3	Phuket	3	14	58
4	Ranong	3	10	47
5	Trang	4	13	51
6	Satun	4	17	70
<b>TOTAL</b>		<b>25</b>	<b>95</b>	<b>407</b>



\* Based on statistics surveyed on February 15, 2005

56/73-74 Bang Niang  
Village 5  
Khuk Khak Subdistrict  
Takua Pa District  
Phang Nga Province  
82190 Thailand

**T:** +66 (0) 76 420 808  
**F:** +66 (0) 76 420 810  
**W:** www.d-trac.org

56/73-74 ม.5 ถนนเพชรเกษม  
บางเนียง ต.คึกคัก อ.ตะกั่วป่า  
จ.พังงา 82190

โทรศัพท์: +66 (0) 76 420 808  
แฟกซ์: +66 (0) 76 420 810  
เว็บไซต์: www.d-trac.org